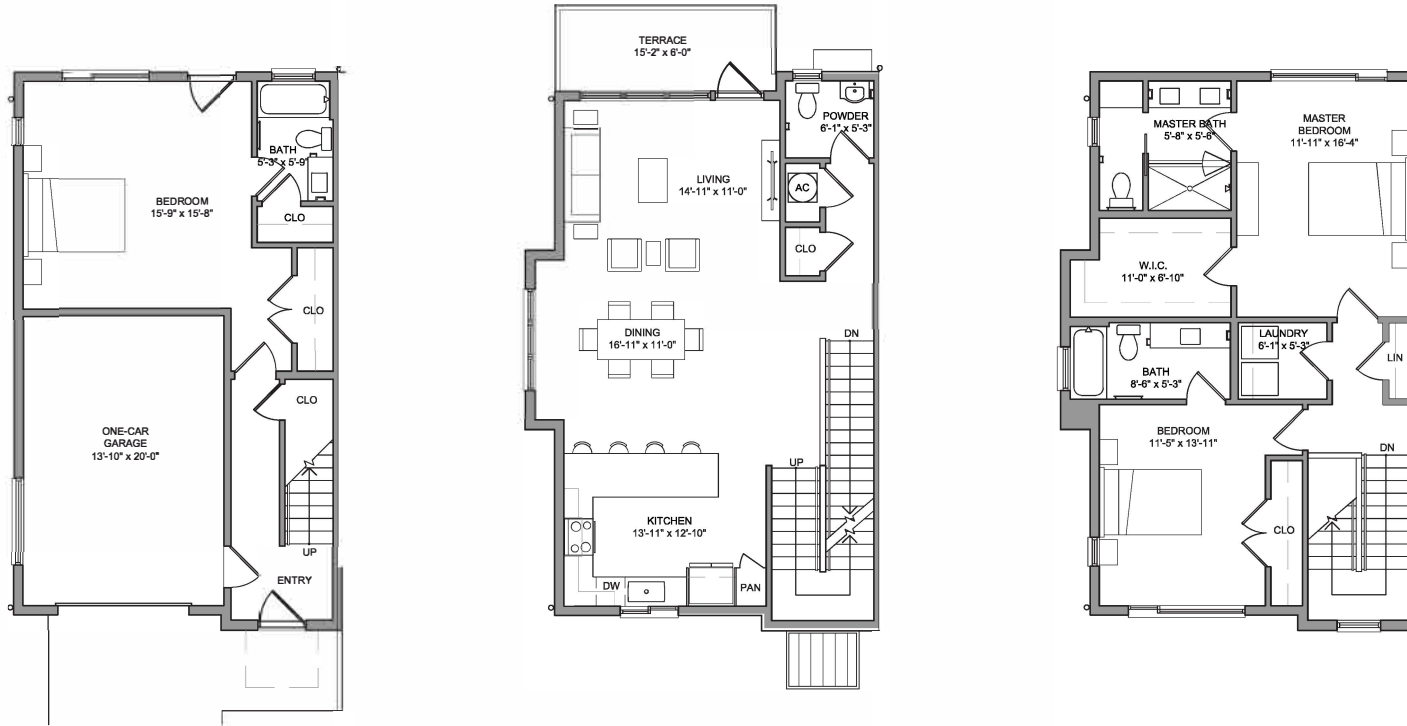


# EMERSON



## WHITMAN

3 bedroom | 3.5 bath | 3 levels

Architectural: 2,068 A/C SF / 300 SF garage

Gross: 2,175 A/C SF / 307 SF garage

There is only one Whitman home available in the entire Emerson community. Sip your morning coffee on the terrace overlooking the woonerfs. Enjoy a book in the living area, with natural light streaming in. Put your feet up and relax in the large master suite.

Entertain on the second floor, where guests can easily move through the adjoining kitchen, dining, and living areas.

Use extra space in the third bedroom, as an Imagine room to customize however you please.

Contact Lisa Fetrow at 352.559.8126 or [LisaFetrow@EmersonGainesville.com](mailto:LisaFetrow@EmersonGainesville.com) | [EmersonGainesville.com](http://EmersonGainesville.com)