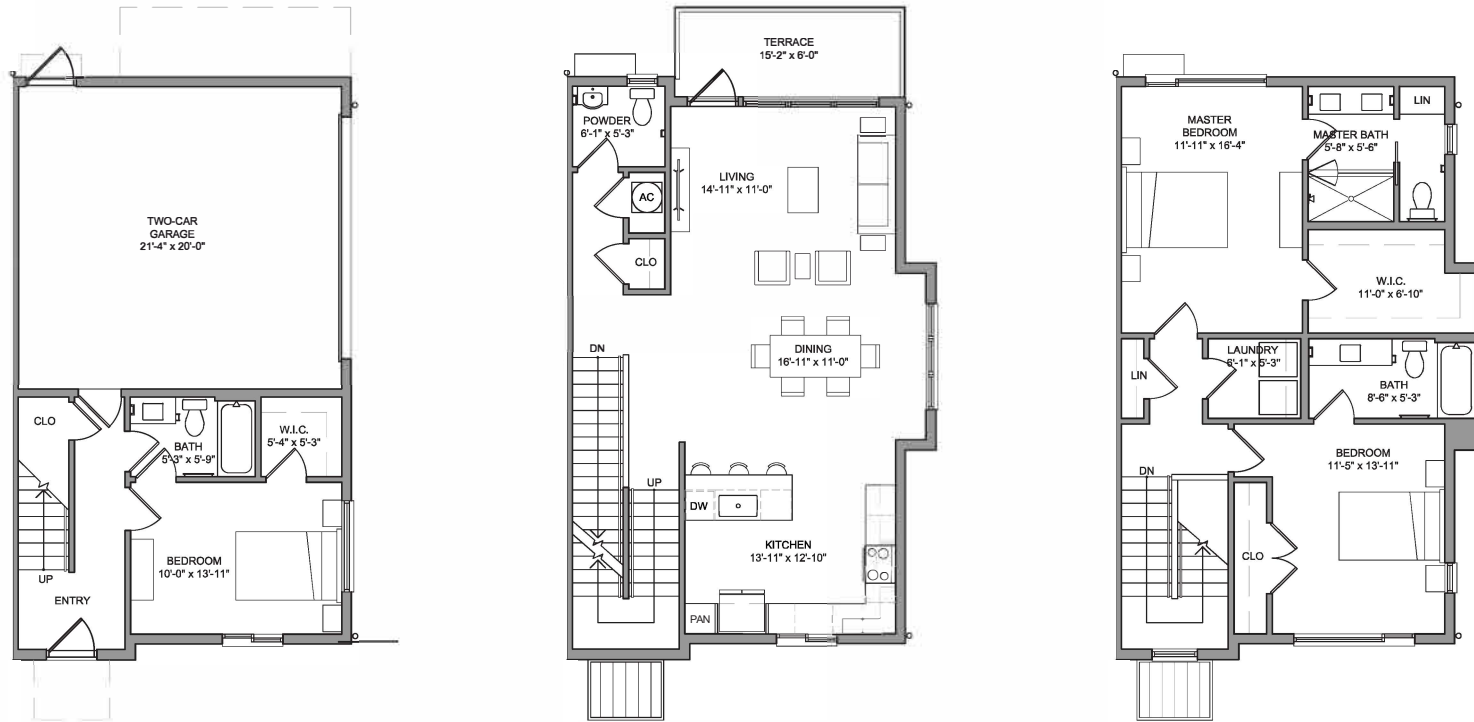


EMERSON



WALDEN

3 bedroom | 3.5 bath | 3 levels

Architectural: 1,918 A/C SF / 447 SF garage

Gross: 2,016 A/C SF / 467 SF garage

The Walden provides spaces that are as luxurious as they are functional. This flexible floor plan connects the kitchen, dining, and living area together to create an airy, connected space. The home's large terrace is connected to the living area, providing extra room to entertain or relax outside. The Walden has three different floor plans, as this home is available at either end of the building or the middle.

Contact Lisa Fetrow at 352.559.8126 or LisaFetrow@EmersonGainesville.com | EmersonGainesville.com