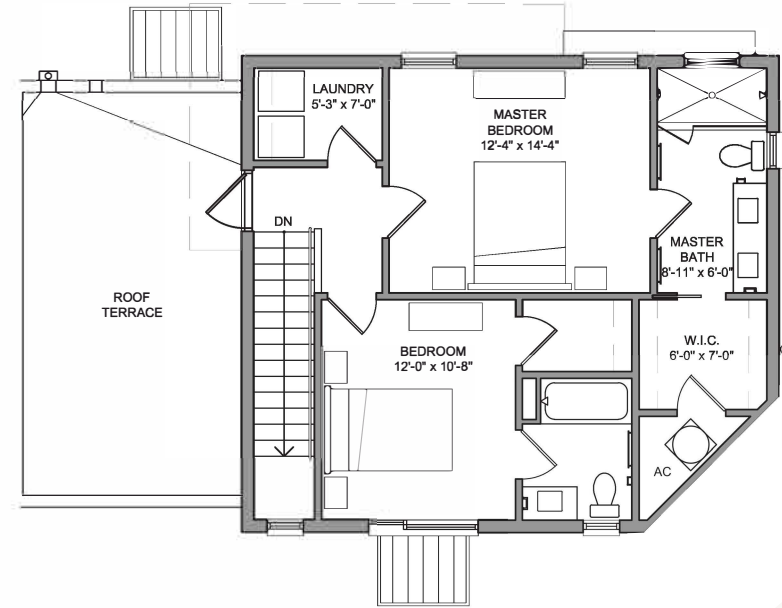
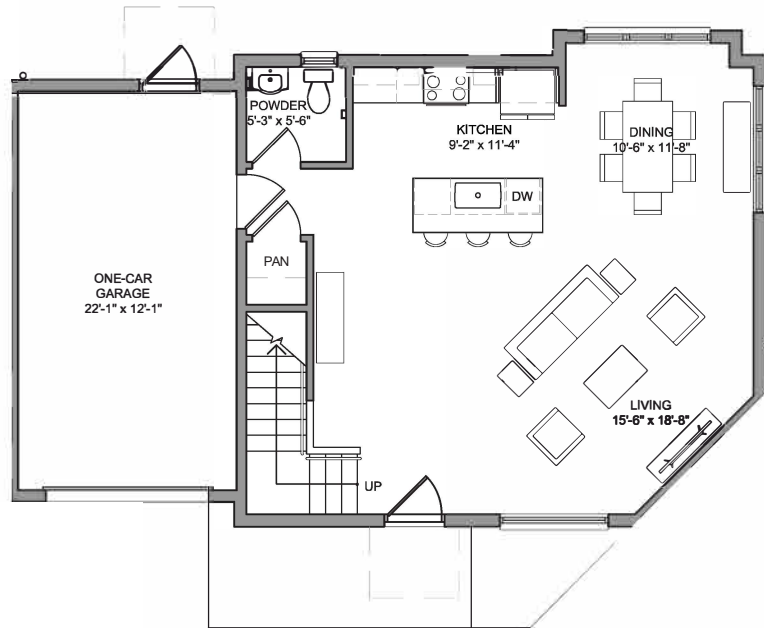


EMERSON



ALCOTT

2 bedroom | 2.5 bath | 2 levels

Architectural: 1,379 A/C SF / 286 SF garage

Gross: 1,443 A/C SF / 304 SF garage

The Alcott offers airy, flexible living spaces with an open floor plan, a large terrace, and a second bedroom that could also serve as an office or gym. This home provides all the features for convenient, luxurious living. A limited number of these corner units are available.

Contact Lisa Fetrow at 352.559.8126 or LisaFetrow@EmersonGainesville.com | EmersonGainesville.com